

CORRECTION

Structure and Transcriptional Regulation of Protein Phosphatase 2A Catalytic Subunit Genes, by Yeesim Khew-Goodall, Regina E. Mayer, Francisca Maurer, Stuart R. Stone, and Brian A. Hemmings*, Volume 30, Number 1, January 8, 1991, pages 89–97.

Page 94. Part of Figure 4 was omitted during printing. The complete figure is

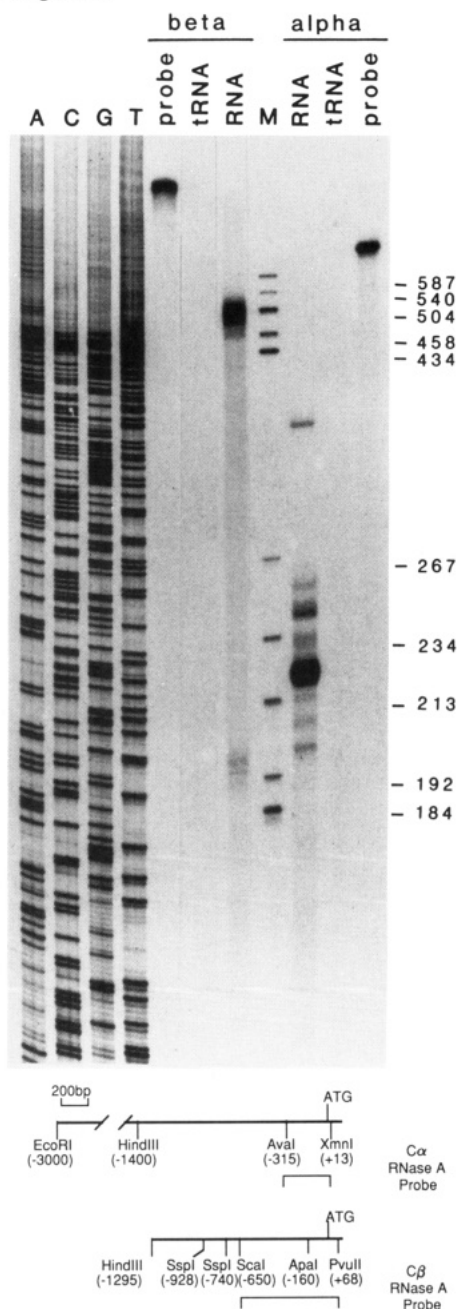


FIGURE 4: Start site mapping by RNase protection analysis. cRNA probes generated to the 5' end of the $C\alpha$ or $C\beta$ genes (bottom) were hybridized to total RNA (100 μ g) or tRNA (100 μ g) and digested with RNases A and T_1 . The protected fragments were resolved by electrophoresis on 8% polyacrylamide gels containing 8 M urea together with an aliquot of each of the undigested probes. Lanes marked A, C, G, and T are a set of sequencing reactions obtained by using a known DNA template used as a molecular weight marker. Lane M contains pBR322 DNA cleaved with *Hae*III and labeled with polynucleotide kinase and [γ - 32 P]ATP. The autoradiogram has been overexposed to reveal the minor bands and therefore does not reflect the quantitative difference between the $C\alpha$ and $C\beta$ major transcripts. The restriction sites used for subcloning and linearization to generate the $C\alpha$ and $C\beta$ cRNA probes are shown below. The numbers correspond to nucleotide positions as shown in Figure 3.